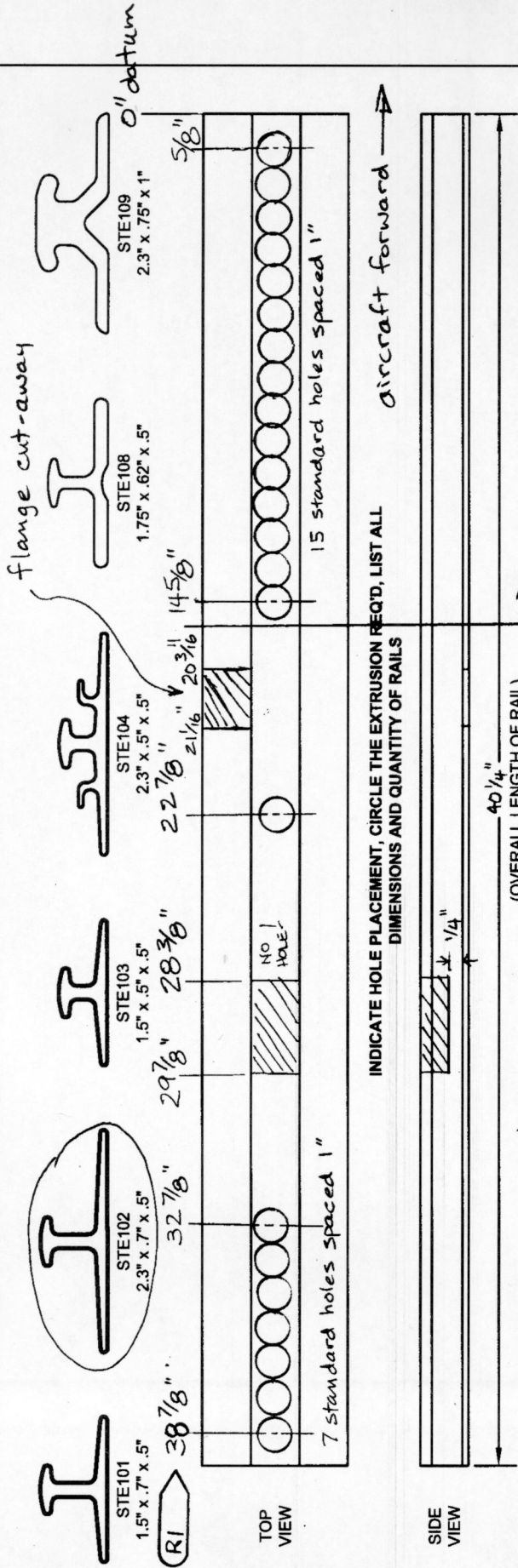




800-544-8594
 (785) 594-3572
 Fax (785) 594-3922
 www.mcfarlaneaviation.com
 sales@mcfarlaneaviation.com

McFarlane Aviation Products

McFarlane Aviation, Inc.
 696 E. 1700 Road
 Baldwin City, KS 66006



INDICATE HOLE PLACEMENT, CIRCLE THE EXTRUSION REQ'D, LIST ALL DIMENSIONS AND QUANTITY OF RAILS

DUPLICATE FOR LH INBOARD
 SEE PAGE 2

- Notes:
- Extrusion is sold by the inch, and will be rounded up to the nearest inch.
 - Hole depth and diameter are drilled to our standard measurements unless otherwise indicated. Standard hole depth-diameter for the roller flange is .286" and standard diameter is .271" for STE103 and STE104. Standard hole depth on STE101 and STE102 is .330" with standard diameter of .277". Additional charges may apply for drilling holes of non-standard depth and diameter.
 - Hole-to-hole measurements are taken from the center of the holes.
 - Extrusions are finished aluminum. Anodizing or Alodining are available for an additional fee and take up to two weeks for processing.

ANODIZED

NTS.

I HEREBY REQUEST MCFARLANE AVIATION, INC. TO MANUFACTURE A CUSTOM SEAT RAIL TO MY SPECIFICATIONS AS DETAILED ABOVE. I UNDERSTAND THAT THIS OR ANY OTHER CUSTOM SEAT RAIL MANUFACTURED BY MCFARLANE AVIATION, INC. IS NOT FAA-PMA APPROVED, AND THAT IT IS MY RESPONSIBILITY TO OBTAIN FAA APPROVAL FOR INSTALLATION IN A CERTIFIED AIRCRAFT

SPECIAL REQUIREMENTS NOTES: 1414214-15
 SEAT TRACK - FWD LH OUTBOARD
 FOR 1979 C337 MODEL H
 QUANTITY 1